

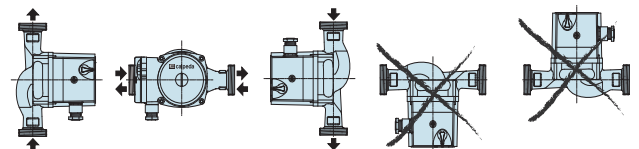


Construction

Bronze pump casing with suction and delivery connections with the same diameter and on the same axis (in-line).
Stainless steel AISI 316 can.
Brass unions on request.

| Materials | NCS3 ...-40, -50 | NCS3 ...-70 |
|-------------|------------------|-------------|
| Pump casing | Bronze | Bronze |
| Impeller | Composite | Composite |
| Shaft | Stainless steel | Ceramic |
| Bearings | Graphite | Ceramic |

Installation



Applications

Circulation of sanitary hot water.

Operating conditions

Liquid temperature from +5 °C to +65 °C.
Ambient temperature up to 40 °C.
Sound pressure ≤ 43 dB (A).
Minimum suction pressure: 0,05 bar at 50 °C
Maximum permissible working pressure 10 bar.

Motor

2-pole induction motor, 50 Hz.
Three adjustable speeds.
NCS3: single-phase 230 V.
Insulation class H.
Protection IP 44.

Unions

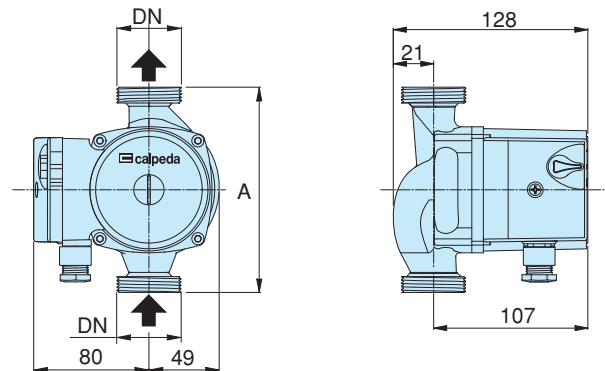
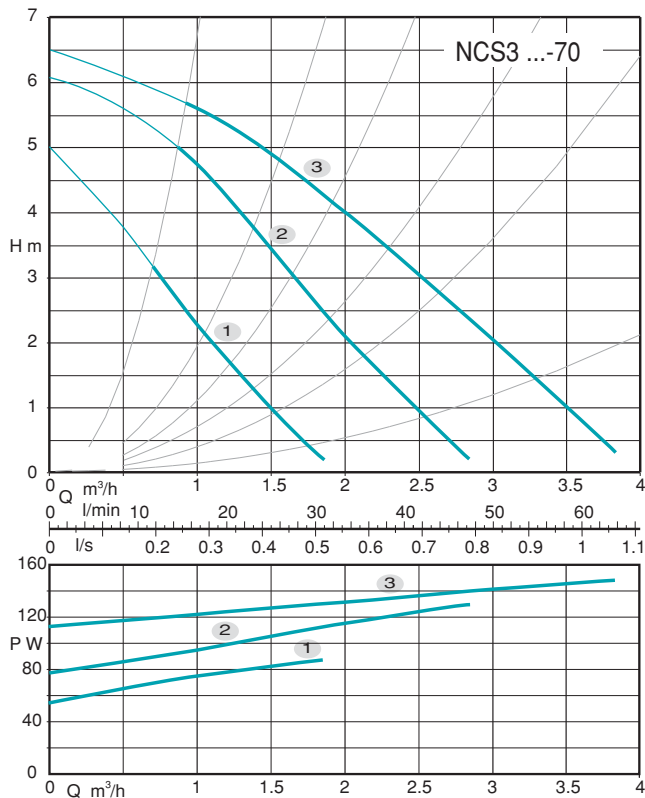
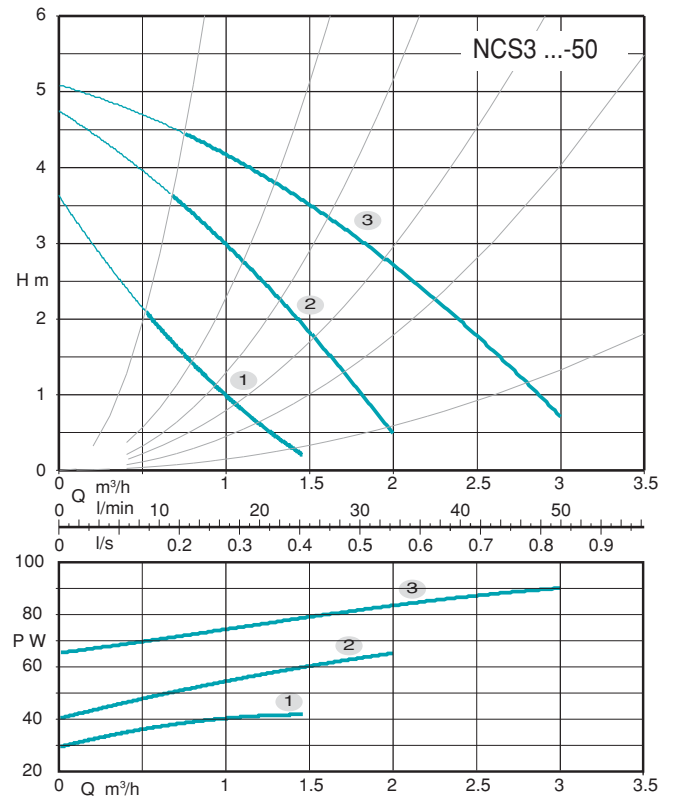
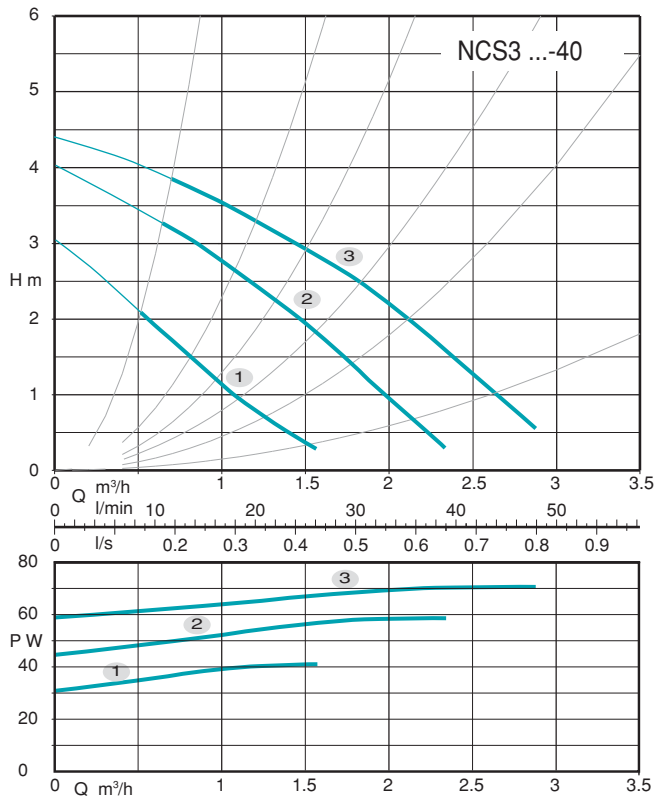
| | | |
|---------------------------------|---------|-------|
| | | |
| TYPE | DN | DN1 |
| KIT G 1 1/4 - G 3/4 (NCS3 20..) | G 1 1/4 | G 3/4 |

Désignation

NCS3 20 - 40 / 130

Série _____
DN des orifices en mm _____
Hauteur maxi dm _____
Entraxe pour installation mm _____

Characteristic curves, dimensions and weights



| TYPE | DN | Pos. | P1 (W) | 1x 230 V [A] | A mm | [kg] |
|----------------|---------|------|--------|--------------|------|------|
| NCS3 20-40/130 | G 1 1/4 | 3 | 70 | 0,30 | 130 | 2,3 |
| | | 2 | 59 | 0,26 | | |
| | | 1 | 41 | 0,18 | | |
| NCS3 20-50/130 | G 1 1/4 | 3 | 91 | 0,38 | 130 | 2,5 |
| | | 2 | 65 | 0,28 | | |
| | | 1 | 42 | 0,18 | | |
| NCS3 20-70/130 | G 1 1/4 | 3 | 148 | 0,66 | 130 | 3,8 |
| | | 2 | 128 | 0,59 | | |
| | | 1 | 87 | 0,41 | | |